

WHERE POTATOES GROW, LIVELIHOODS FLOURISH

Planet IPE | May 2026



Decent Work & Economic Growth



FOLLOW THE ROOTS
TO SEE LASTING
IMPACT TAKE SHAPE

MD SPEAKS



Ashwajit Singh

Founder & Managing Director

Rooted in Development

Development, much like the potato, rarely draws attention to itself. Yet some of the most meaningful transformations in society emerge quietly through stronger institutions, resilient systems, empowered communities, and enduring partnerships.

At IPE Global, we believe that sustainable development is driven by the power of diversity - of people, ideas, partnerships, and solutions. From strengthening health systems and nutrition to advancing climate resilience, gender equality, and inclusive growth, our work is rooted in creating locally relevant solutions with lasting impact.

This year's International Day of Potato theme, **"Harvesting Diversity, Feeding Hope"**, is a timely reminder that **resilience is built through diversity, adaptability, and locally grounded solutions**. In many ways, the potato reflects the spirit of development itself unassuming yet essential, quiet yet transformative, sustaining hope and progress for millions across the world.



Rooted in Impact



Potato Lesson #1:
Strong systems
grow underground.



Potato Lesson #4:
One root can
multiply impact.



Potato Lesson #2:
Simple solutions
feed millions.



Potato Lesson #5:
Quiet work creates
visible change.



Potato Lesson #3:
Resilience starts
in tough soil.



Potato Lesson #6:
Local roots,
global reach.



Potato Lesson #7:
Healthy roots support
strong futures.



Potato Lesson #8:
Where potatoes grow,
livelihoods flourish.

Editor's Note



Growth Beneath the Surface

In development, visible outcomes are often only a small part of the story. Behind every improved health indicator, strengthened institution, restored water system, or an empowered community lies years of groundwork, coordination, trust building, and persistence. Much like the potato, the real work happens beneath the surface.

The potato is one of the world's most widely consumed and adaptable crops. According to the Food and Agriculture Organisation, global potato production exceeds 370 million tonnes annually, reinforcing its importance in feeding communities across the world.

This year's International Day of Potato theme, "Harvesting Diversity, Feeding Hope", speaks directly to the idea that resilience is built through diversity of solutions, diversity of people, and diversity of local knowledge. Development too

cannot follow a single formula. It must evolve with context, respond to realities on the ground, and remain rooted in the needs of communities. At IPE Global, much of our work focuses on strengthening the foundations that enable long term change from systems and governance to partnerships, data, institutions, and implementation support. These efforts may not always be immediately visible, but they create the conditions necessary for sustainable impact.

This edition of Planet IPE celebrates the quieter side of transformation the work that sustains progress, strengthens systems, and continues to create impact long after the spotlight moves elsewhere.

Tanya Singh
Senior Director



DID YOU KNOW?

POTATO FACTS. BIGGER IMPACT.

Potatoes teach us powerful lessons for social development.

Small in appearance.
Powerful in impact.

POTATO FACT	SUPPORTS SDGs	SOCIAL DEVELOPMENT SECTOR
 Potatoes are nutritious, affordable, adaptable, and nourishing.	 1 NO POVERTY  2 ZERO HUNGER	 Nutrition & Food Security
 Potatoes require less water than many staple crops.	 6 CLEAN WATER AND SANITATION	 Water, Sanitation & Hygiene
 The potato survives across generations and adapts to diverse climates.	 13 CLIMATE ACTION	 Climate Resilience & Environment
 A potato may look simple, but it contains complex nutritional value.	 3 GOOD HEALTH AND WELL-BEING	 Health & Well-being
 Potatoes became a food security crop during uncertain times.	 11 SUSTAINABLE CITIES AND COMMUNITIES	 Resilience & Disaster Response
 Potatoes connect farms, markets, nutrition, livelihoods, water, and climate.	 17 PARTNERSHIPS FOR THE GOALS	 Partnerships & Inclusive Growth
 The roots of a potato plant spread wider than what appears above the soil.	 8 DECENT WORK AND ECONOMIC GROWTH	 Livelihoods & Inclusive Growth
 Potatoes can transform into many forms while retaining their core value.	 9 INDUSTRY, INNOVATION AND INFRASTRUCTURE	 Innovation & Sustainable Value Chains



WHAT THESE LESSONS REFLECT ABOUT US



Impact That Lasts



People First



Innovative Solutions



Collaborative Partnerships



Sustainable Future

Like the potato, we turn simple ideas into lasting impact for communities.

THE POTATO CHALLENGE

Just as potatoes take different forms to serve different needs, development interventions also adapt to different challenges and contexts.



IF YOUR **PROJECT** WERE A **POTATO DISH**, WHAT WOULD IT BE AND WHY?



Ours Would Be **“French Fries”**

this project experience was fast, adaptive, and shaped by quick responses to changing realities on the ground.

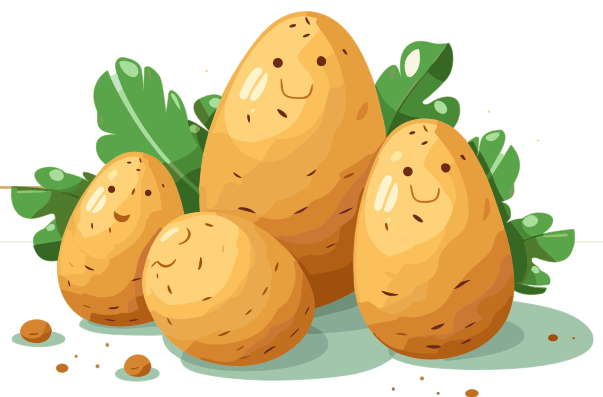


HOW HAS YOUR WORK ADAPTED QUICKLY TO CHANGING NEEDS ON THE GROUND?

*The greatest example of adapting to changes on the ground was in response to the COVID-19 pandemic. **Although it seems a distant memory, its legacy remains, through increased use of on-line interview platforms, reduced travel to undertake interviews and focus groups in person, and use of messaging (e.g. on Teams) in day-to-day work. The change was imposed by global events and very quick!** Other more recent adaptations – although actually a revisiting of much earlier thinking in development about participatory approaches – relate to innovative and inclusive methods for elevating the voices of young women and men within our learning- focused and evaluative work.*

CLARISSA POULSON

Triple Line





Ours Would Be “Dum Aloo”

Slow-built under pressure, sealed tight, and bursting with depth when it finally opens



HOW HAS YOUR WORK ADAPTED QUICKLY TO CHANGING NEEDS ON THE GROUND?

*On the Multi-Hazard Vulnerability Risk Atlas (MHVRA) project in Mumbai, **the shift from mapping risk to actually embedding it into the city’s Command-and-Control System (CCS) felt like the moment our work stopped being a report and started becoming a real-time resource.** We integrated climate hazard modelling - floods, cyclones, heatwaves, and landslides, directly into the Brihanmumbai Municipal Corporation’s (BMC) operational systems so that decision-makers are not reacting after a crisis, but preparing ahead of it. Knowing that this work is expected to benefit over 30 lakh people through improved preparedness, reach over 16 lakh women through gender-sensitive risk analysis, and potentially avert nearly \$49 billion in losses by 2070 keeps the purpose very real. For me, adapting to changing needs on the ground is not just about revising frameworks but it is about helping cities think and respond differently to risk.*

RAJNISH

Climate Change & Sustainability

Ours Would Be “Aloo Paratha”

...filling, dependable, and loved by everyone.

If the DMF PMU Angul project were a potato dish, it would be “Aloo Paratha” – filling, dependable, and loved by everyone. Just like a good meal brings comfort, our work helps mining-affected communities access better healthcare, livelihoods, education, and infrastructure in their daily lives.

VINAYAK SAROLIA

Health Nutrition & Wash



Ours Would Be “French Fries”

...Quick to prepare and widely relatable

***Through industry-aligned skilling, training modernization, and innovation-focused TVET interventions, we are helping youth gain employable skills faster and connect them to sustainable livelihood opportunities.** Much like French fries reaching every table, our work aims to reach communities quickly, create visible momentum, and contribute to inclusive economic growth. The project’s adaptive approach has also enabled us to respond swiftly to evolving industry needs and future workforce demands in real time.*



POMMI BISWAS

Education & Skills
Development

Ours Would Be “Aloo Tikki”

...a perfect example of getting the balance right.

*Crisp outcomes are what people see, but behind them lies a careful mix of ingredients: partnerships, community engagement, frontline workers, and government systems. **The everyday challenge we support to solve is ensuring that essential services don't stop at policy documents but reach the people they're meant for.***

DIVYA SANTHANAM

Social & Economic Development



Ours Would Be “Marble Potatoes”

...blending effortlessly with different ingredients while retaining their distinct flavour

As a baby potato merged with several ingredients still stood out due to its fine savor that melts softly in the mouth joyfully satisfying one's cravings. I joined IPE in 2025 and was assigned in Region IVB as a stranger. With my kindness and generosity in terms of time, knowledge and anything I can offer, I should say I have made each one as a friend making my coordination and work easier. The kind of approach as a mental health practitioner helped a lot in making a difference for both the management and employees and especially in integrating with everyone else equally with so much gusto. This made an impact for others to appreciate the objectives of the project which will be beneficial to everyone.

RICARDO HATE

Project Coordinator, SIPTVETS, Philippines



Ours Would Be “Boiled Potato”

Simple, essential, and quietly building the foundation



What simple intervention in your work has made the biggest difference to people's everyday lives?"

*In my work under Human Resources for Health (HRH), a simple yet impactful intervention has been streamlining recruitment and timely deployment of healthcare staff at service delivery points. By ensuring that the right personnel are available where they are most needed, **we help reduce service gaps and improve access to essential healthcare.** This directly supports frontline systems and makes a meaningful difference in addressing everyday healthcare challenges faced by communities.*



MAYANK
HR



Ours Would Be “**Boiled Potato**”

representing collaboration, inclusion & sustainability

What long-term shift are you most hopeful your work will create?

One of the most lasting impacts of ISRC’s continuous work is the shift toward a more inclusive, sustainable, and gender-responsive approach to urban flood resilience in Chennai.

By strengthening the participation of women and vulnerable communities in decision-making, the interventions are promoting more equitable and people-centered disaster risk reduction practices.

ESTHER RANI ANDIAPPAN

Urban Infrastructure & Tourism



Ours Would Be “**Mashed Potato**”

blending different skills, teams, and perspectives into one shared purpose.

HOW HAS COLLABORATION SHAPED THE SUCCESS OF YOUR PROJECT?

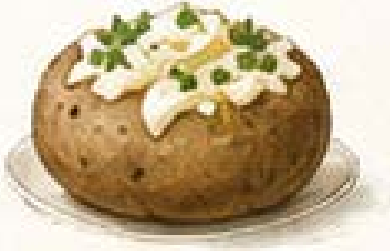
*Collaboration is not a perfect dish - it is a dynamic back and forth of challenging each other and building together through right mix of skills. Through collaboration in our team, we break the silos and choose ‘we’ over ‘me’. **Through right mix of leadership, operations, communications, monitoring & learning and capacity building, we are achieving our objective of empowering women and bringing change to their lives.***



KAVITA PATEL

SEE, Project EMBRACE

Ours Would Be “**Baked** Potatoes”



carefully planned just like our work leading to practical learning and better decisions over time.



What meaningful change is your project quietly building over time?

*Our feasibility studies on drainage projects in Ghana is ensuring investment in properly designed drains and retention ponds will have a major impact on local communities by helping to prevent the flooding of homes and collapse of buildings due to heavy surface runoff. **This will have a major impact on the livelihoods and well-being of local communities, especially the most vulnerable women and children.***

RICHARD SLATER
Triple Line

What long-term shift are you most hopeful your work will create?

*I'm most hopeful that my work helps shift how data is used in development—from something done for reporting to something that genuinely informs decisions and improves programmes. In my experience, **there's often a gap between collecting data and actually learning from it, and I want to help close that.** I care about building systems that make information practical, usable, and owned by the people closest to the work. Over time, I hope this leads to more responsive programmes that better reflect real needs on the ground...*



EYERUSALEM GIRMA
Triple Line

Ours Would Be “**Baked Potatoes**”

...built slowly and carefully to create something wholesome and dependable

What is one lasting change your work is helping create over time?”

*A meaningful change the project is quietly building over time is a stronger and more resilient urban flood management ecosystem for Chennai. As the Institutional Strengthening and Reforms Consultant (ISRC) for the Greater Chennai Corporation, IPE Global is supporting institutional strengthening through coordinated governance, flood preparedness, early warning systems, disaster risk reduction, capacity enhancement, gender equality and social inclusion (GESI), citizen participation and community engagement to advance urban flood resilience in Chennai. **The larger goal is to help build a city that is more coordinated, sustainable and better prepared for future flood-related challenges.***



SHERINE
Urban Infrastructure & Tourism

Ours Would Be “**Masala Fries**”

combining multiple ingredients and layers into something impactful and effective.

What long-term shift are you most hopeful your work will create?

A more flood-resilient and prepared Chennai is the transformative change our ISRC project is quietly building over time. By supporting the Greater Chennai Corporation in strengthening storm water management, technical coordination, and institutional systems, the project is helping the city respond better to monsoon challenges year after year. Behind the scenes, the project is improving coordination between departments, strengthening infrastructure planning, and supporting effective flood mitigation efforts on the ground. Over time, these efforts are contributing to safer neighbourhoods, quicker response during monsoon and flood situations, and better urban services for the people of Chennai, helping build a stronger and more resilient city for the future.



PRAVEEN KUMAR
Urban Infrastructure
& Tourism



Events

Climate

At the India Heat Summit 2026 organised by Climate Trends, Abinash Mohanty highlighted the need for stronger financial frameworks to translate heat risk data into actionable public policy, reinforcing IPE Global's focus on evidence based and implementation driven climate resilience solutions such as the Model Heat Action Plan for Patna.



Developed India's first Model Heat Action Plan for Patna district in collaboration with UNDP India under the aegis of BSDMA and District Administration Patna. The plan integrates hyper local heat risk assessments, climate projections and a digital decision support system to strengthen heat resilience and enable climate informed planning.

Conducted stakeholder consultation workshops across 25 climate vulnerable districts in Uttar Pradesh to support the development of District Disaster Management Plans in collaboration with UNDP under the aegis of the Government of Uttar Pradesh, focusing on translating hyper local risk assessments into community level climate resilience action.



Urban Infrastructure & Sustainability

Supported the Atmanirbhar Panchayat initiative by the Ministry of Panchayati Raj as the Technical Agency for the Panchayat Revenue Enhancement Cell, focusing on governance, financing, project structuring and capacity building to strengthen financially self reliant Panchayats across the country.

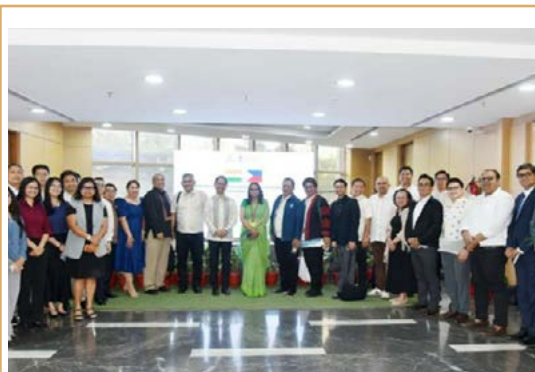
[KNOW MORE](#)



Education Skills & Development

Supported TESDA Philippines as the Project Management Consultant for the ADB funded SIPTVETS Project. The first international benchmarking visit to India under the project brought together 25 TESDA officials to engage with key institutions and explore India's TVET ecosystem, innovation and skill development best practices.

[KNOW MORE](#)



Social & Economic Empowerment

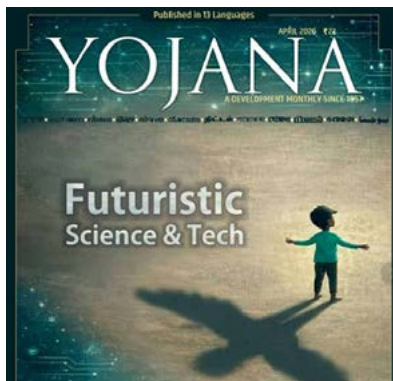
Partnered with GESIA IT Association to strengthen women's participation in Gujarat's technology workforce. The collaboration focuses on skilling, industry engagement and creating more inclusive employment pathways for women in the tech sector.



Supporting the Department of Women and Child Development and ICDS Maharashtra as a technical partner in implementing the Cash Plus Program to address Low Birth Weight and strengthen maternal nutrition outcomes across the state.



Partnership with the Skills, Employment, Entrepreneurship & Innovation Department (SEEID), Government of Maharashtra, to support data-driven gender planning and increase women's workforce participation. As a Technical Support Unit, will support skilling and employment pathways to place young women at the centre of Maharashtra's labour market transformation.



Featured in the April 2026 issue of Yojana Magazine, the Integrated Cash Plus Model is being implemented by the Government of Rajasthan with support from IPE Global to address undernutrition at the grassroots level.

Shared perspectives on embedding gender and social inclusion into strategic investment planning for a more inclusive and future ready skilling ecosystem at the "Transforming Skills Ecosystem" workshop under the DAKSH Maharashtra Program.



Partnered with the Department of Women and Child Development, Government of Odisha to support the implementation of the Cash Plus programme to improve maternal and child nutrition outcomes in the state.

Health Nutrition & Wash

Convened the Validation Workshop for the Kenya Biosciences Landscape Mapping Study during STRI4Society Week 2026 in Nairobi in partnership with the University of Nairobi and supported by the FCDO, bringing together stakeholders across government, academia, research and industry to validate findings and strengthen Kenya’s biosciences ecosystem.



Visited Kenya for ecosystem mapping and stakeholder consultations under the FCDO funded Biosciences Landscape Mapping Study, being implemented by IPE Africa in collaboration with the University of Nairobi. The visit brought together stakeholders across research, academia, innovation and policy to assess Kenya’s biosciences ecosystem and identify opportunities for collaboration, innovation and ecosystem strengthening.

Partnered with DMFT Ramgarh, Jharkhand, as the Project Management Unit (PMU) agency for the district. Formalised in the presence of Development Commissioner and Deputy Development Commissioner, the partnership aims to strengthen planning, monitoring, and implementation of DMF-supported development initiatives. This also marks our first DMF engagement in Jharkhand following our successful assignment in Odisha.



In the MEDIA



Dr Shweta Khandelwal shared insights on rising temperatures and the importance of nutrition and public health on ZEE Business show Aapki Khabar Aapka Fayada.



Participated as a technical partner in the consultation workshop for the District Disaster Management Plan (2026–27) in Gorakhpur.

[Read More](#)

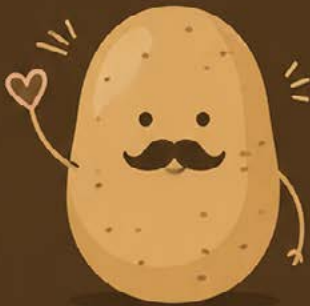


Abinash Mohanty

- Featured in The Wire discussing how governance gaps and preparedness challenges are intensifying the impacts of heatwaves across India. [Read More](#)
- Highlights in DW that India’s decision to step back from the COP33 bid reflects a stronger focus on domestic climate action and self-reliant growth, marking a shift towards more equitable and self-determined climate leadership. [Read More](#)

Heat is not a national disaster
Listing heatwaves as a disaster would show that the government is acknowledging the problem, said Abinash Mohanty, head of Climate Change and Sustainability at the advisory group IPE Global. Then, he says, funds will start flowing in.

Rooted in Many Roles



COMMUNITY



PARTNERSHIPS



WATER



EDUCATION



GROWTH



HEALTH



Expanding Horizons. Enriching Lives.

TRIPLELINE



Expanding Horizons. Enriching Lives.



IPE Global Group Company



Centre for Knowledge & Development

Credits: Team Corporate Communication

Tanya Singh, Shilpi Jain, Priya Khurana, Punya Mishra, Shreya Basak, Pahi Mehra

Visit www.ipeglobal.com & www.tripleline.com or write to us at connect@ipeglobal.com