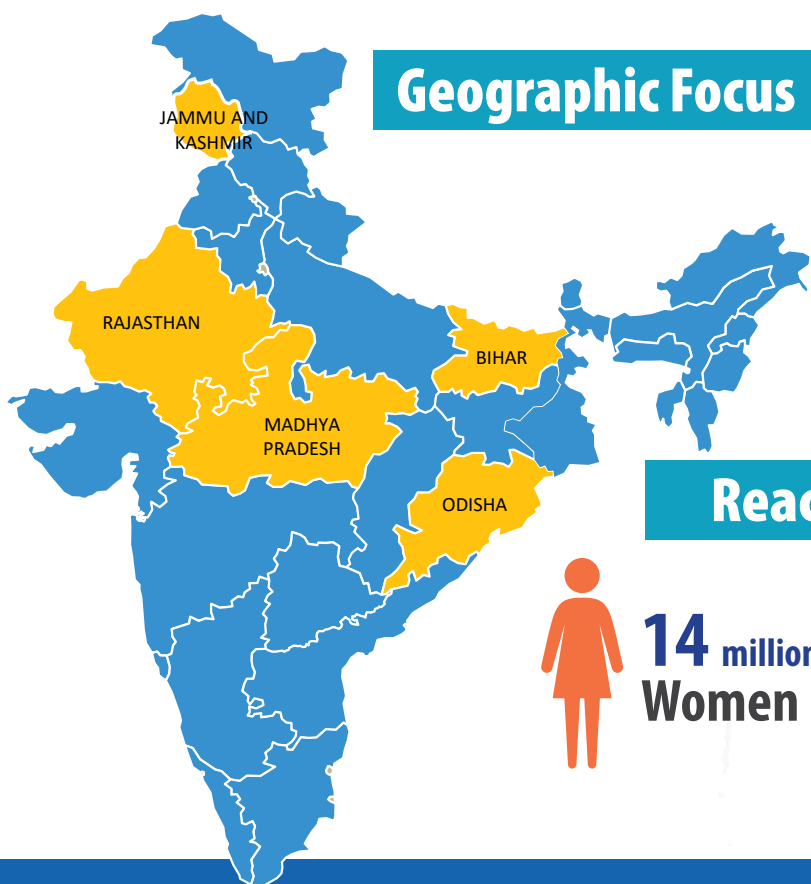


Norway India Partnership Initiative

Health Initiative between India and Norway
started by the two Prime Ministers



Vision: Provide Catalytic, Strategic and Innovative support to National Health Mission



Reach (2006-2023)



14 million Women



61 million Under 5 Children

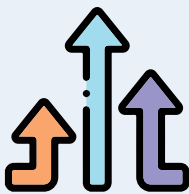
NIPI Impact



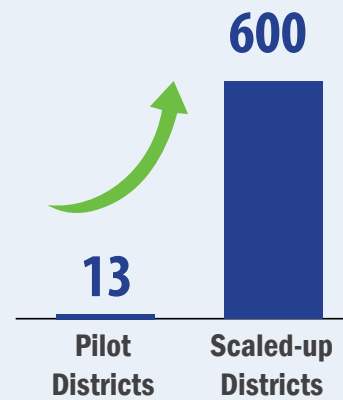
Successful Development Model

- 14 of 15 Innovations introduced by NIPI scaled up across India

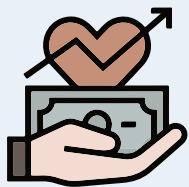
Magnitude of Scale-up



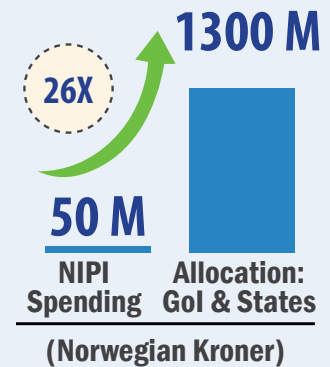
- One of the NIPI innovations - Home Based Care for Young Child (HBYC) scaled up from **13 to more than 600 districts (78%)** of India
- Impact on **18 million children** annually



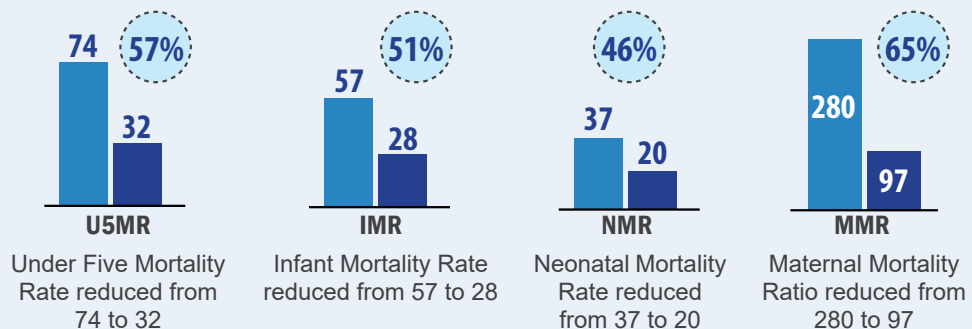
Increased Public Health Spending



- For each unit investment by NIPI, **Government of India (GoI) and States mobilized 26 times funds for scale-up** of NIPI Innovations during (2019-2024)
- Annual Spending of INR 4.5 billion** for one of the Innovations (HBYC)

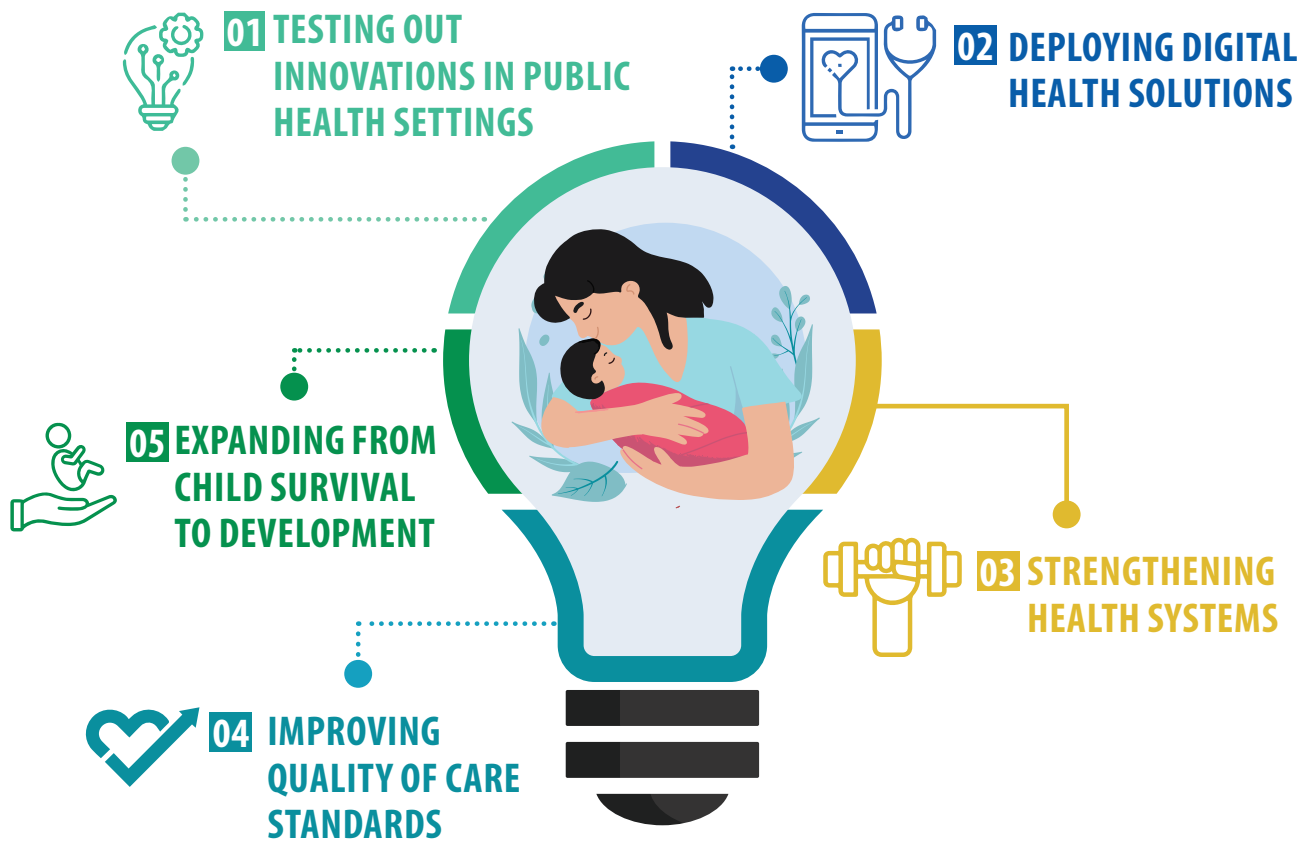


Improved Health Outcomes: Contribution



Estimated Mortalities: India (2006-2020)

Catalyzing **Health Innovations** for NHM



Why is NIPI Model a Blueprint for Global Replication?



NIPI Way Forward: Potential Work Areas

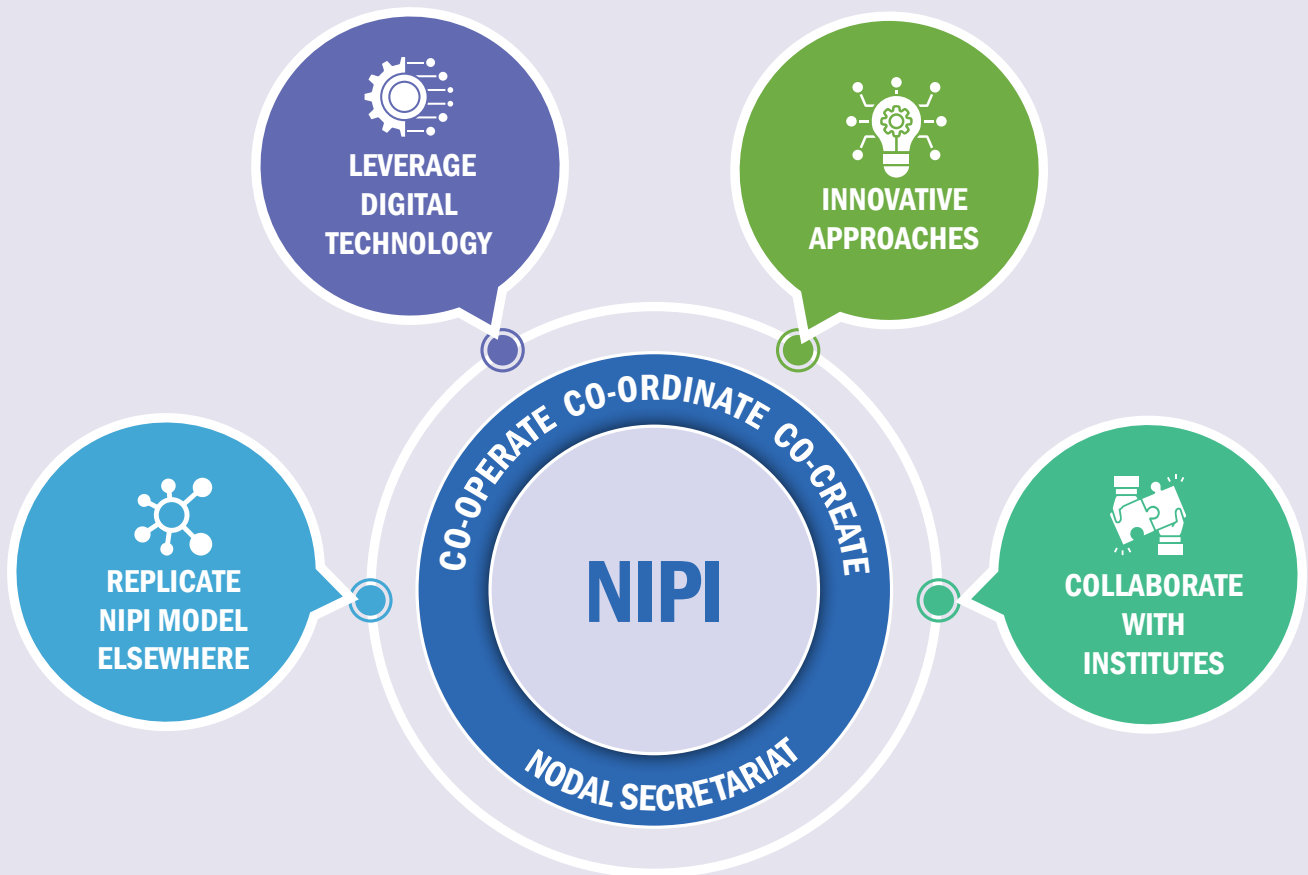
The following four broad objectives could be explored by India and Norway utilizing the existing platform (NIPI):

Replicate: Both Governments come together to showcase and replicate NIPI model and its innovations in other LMICs.

Innovate: Incubate and demonstrate innovative service delivery approaches for SRH, NCDs, nutrition, gender equality and digital health.

Leverage technology: Promote, develop and Integrate digital technologies for solving intractable problems in health.

Collaborate: Foster institutional collaborations between Indian and Norwegian Institutions.



Norwegian Embassy
New Delhi



CONTACT US

Visit <https://www.nipi-cure.org/> for more updates | P: +91 11 40755900 | F: +91 11 24339534
F: <https://www.facebook.com/NorwayIndiaPartnershipInitiative/> | T: <https://twitter.com/nipicu>