

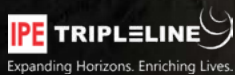


Expanding Horizons. Enriching Lives.

PLANET IPE

JUNE 2017

*Mother Nature is
"Expecting"*



Expanding Horizons. Enriching Lives.



Expanding Horizons. Enriching Lives.



Expanding Horizons. Enriching Lives.



MD SPEAKS

Every year World Environment Day (June 5th) is within three weeks of Mother's Day (May 14th)? Has anyone ever wondered if it is just a coincidence or a message for us to recognise its ultimate motherly role?

Like a mother, nature has been 'giving' unconditionally. It has allowed the use of its resources for our sustenance. So much so, it has even allowed humans the illusion of control and dominance over itself.

The World Environment Day theme for 2017, 'Connecting People to Nature', once again urges us to get outdoors into nature, appreciate its beauty, think how we are ultimately a part of Mother Nature and how much we depend on it.

On this day today, I encourage all of you to nurture the environment; to disengage

from the human cleverness that seeks to only draw and dominate over nature; to reconnect yourself with nature.

IPE Global has a strong environment focus in all its projects and works actively on environment, bio-diversity, responsible tourism and natural conservation projects. It is our small way of saying 'We care' to the Mother Nature.

Man may think he is clever, but nature (like mom) is wise. Let us acknowledge that and do our bit to make a difference. After all, Nature is 'expecting...'

Best Wishes
Ashwajit Singh





INTRODUCTION

The most fundamental connection between nature and women is also the most simple. The earth itself. The expanse from which all life springs, since ancient times referred to as 'Her,' is metaphorically equated with our motherhood (Mother Nature, Mother Earth). The connection is evident. Both our mother and Mother Earth are providers and givers which help sustain all living creatures that depend on them.

Women, earth and nature are connected in their capacity to give life. Just as a mother bears everything for her child with utmost care, Mother Earth ensures survival for all. They have the potential to embrace and inspire. The earth represents the "ground" of our experience. She symbolises the feminine principles of relationship and the cycles of life and humility.

Combining Mother's Day and World Environment Day, this special edition of Planet IPE gives us an opportunity to honour Mother Earth, our own mothers and mothers throughout the world thus appealing to each one of us to #MakeWayForHer.



#MakeWayForHer



CONTENTS

06
DID YOU KNOW?

09
MOTHER'S DAY

10
IPE GLOBAL KEY
ENVIRONMENT PROJECTS

12
OUR AFRICA TEAM CONTINUES
TO MAKE INROADS IN THE
GENDER SECTOR

12
FROM THE IPE NEWSDESK
CONGRATULATIONS!

13
WOMEN BRING A DIFFERENT
PERSPECTIVE

DID YOU KNOW?

MOTHER'S DAY

Always falls on a Sunday!

Ancient myths has it that Greeks and Romans celebrated Mother's Day by honouring Goddess Cybele, personifying Great Mother Earth and Goddess of fertility, and Rhea, mother of the Gods.

The Mother's Day we celebrate today was started by Anna Jarvis in the early 1900s. Jarvis was inspired by her own mother, who had called for "Mothers Work Days" to improve conditions for soldiers on both sides during the Civil War.

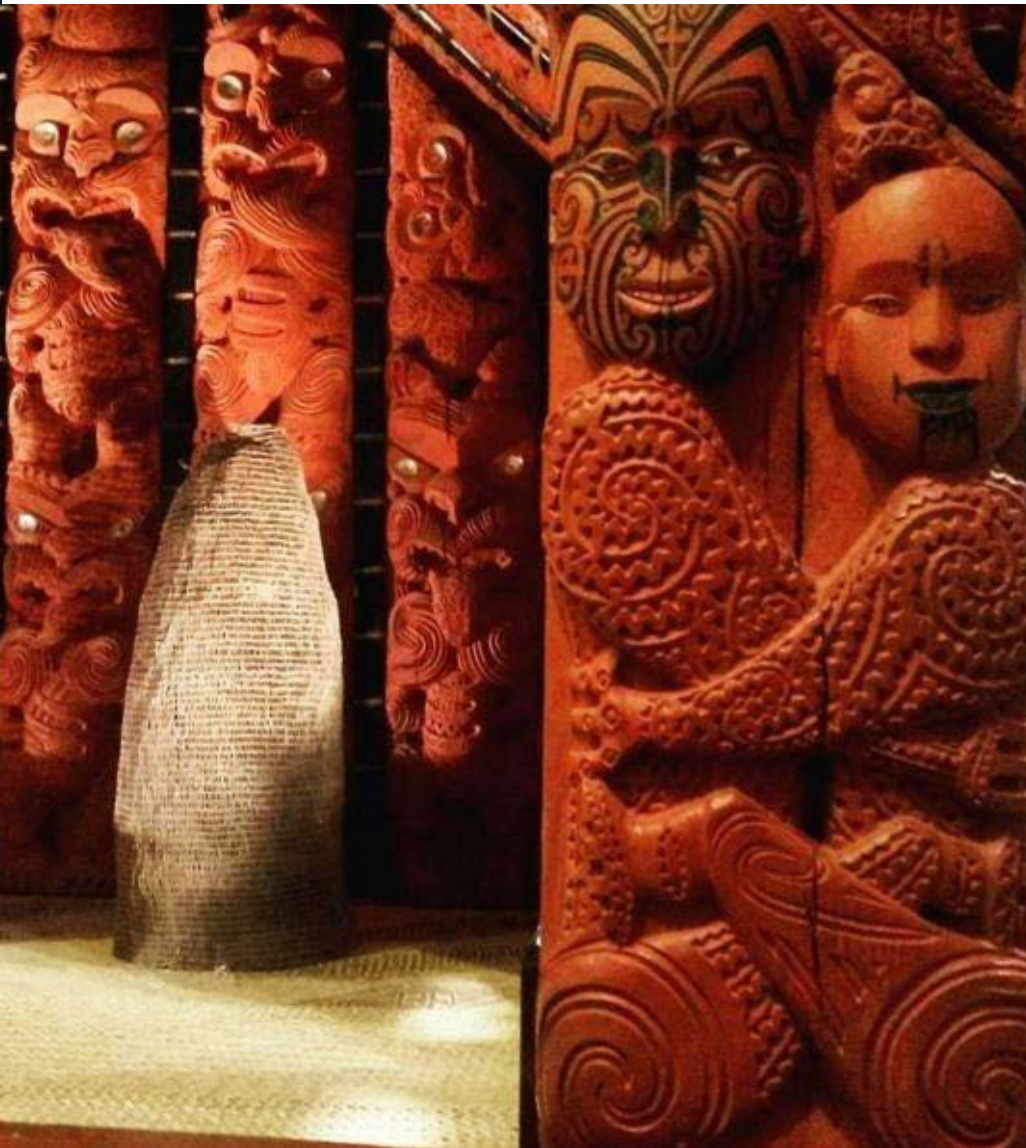
2017 WORLD ENVIRONMENT DAY

Has its own anthem and was first celebrated in 1972!

"Connecting People to Nature," is the theme for World Environment Day 2017 which appeals to each one of us to step outdoors, explore nature, appreciate its beauty and its importance, and to take forward the call to protect our Mother Earth.

The Day celebrates the natural environment and allows a global platform to raise awareness on the environmental issues worldwide, with plans to mitigate these issues as a global community.

Yolanda Kakabadse, President, WWF International rightly quotes "Protecting the planet starts with individuals and the realisation that we are all citizens of one shared home."



Papatūānuku (Mother Earth) is a powerful figure, as she represents the generative foundation of all life. All things are born from her and nurtured by her, including humankind.

In New Zealand Maori tradition, Papatūānuku (Mother Earth) and Ranginui (Sky) were born in the darkness (space). Papatūānuku and Ranginui had several children while remaining in an embrace (see to the left in the pic).

The children grew frustrated with living in darkness between their parents, and conspired to separate them by thrusting Ranginui above and Papatūānuku below. Thus the world of light, Te Ao Mārama, came into being.

The Maternity Benefit (Amendment) Act, 2017

26 weeks' leave for women with 2 surviving kids

12 weeks' leave for women with more than 2 kids

Work from home facility to be provided

Mandatory provision of crèche within a prescribed distance where either **30 women** or **50 people** are working



MOTHER'S DAY

Mom's CAN work... #MakeWayForHer

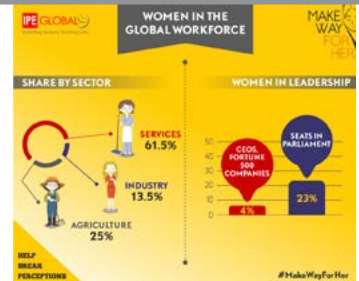
The Percentage of Female CEOs in the Fortune 500 stands at 4% today. Women contribute to almost 50% of the population globally and ignoring this huge talent pool has significant impacts on the bottom line, on families, economies and nations.

With the passing of The Maternity Benefit (Amendment) Act, 2017, India is at third position globally in terms of the number of weeks of maternity leave after Canada (50 weeks) and Norway (44 weeks).

The statute expected to help nearly 1.8 million women workforce in organised sector, has amended the Maternity Benefit Act, 1961 that regulates grant of maternity benefit to women employees in certain establishments.

Furthering our Women's Campaign #MakeWayForHer that advocates strongly for a more gender sensitive and inclusive world of work for women, the Act is a step forward for the country's women, and the nation as a whole, and will help them prosper both socially and economically.

Realising that women's social and economic empowerment is critical for gender equality and for achieving the goals of the 2030 Agenda for Sustainable Development, it strongly calls out to all to **Help Break Perceptions...**



IPE GLOBAL KEY ENVIRONMENT PROJECTS

Women continue to #MakeWayforHer



Dr. Shoa Asfaha

Head of Forest
Governance and
Climate Change
IPE Tripleline

ECOMETRICA | UK SPACE AGENCY || FORESTS 2020, MONITORING AND EVALUATION ELEMENT

Provide expert guidance to the M&E activities for Forests 2020 Indonesia and support translation of outputs to outcomes and impacts thus ensuring that Forests 2020 activities are supportive of ICF (particularly FLAG) programmes in Indonesia.

“Leading IPE Triple Line’s first ever project funded by the UK Space Agency, the win promised a whole new front to us in terms of forest monitoring systems.”

FOREST GOVERNANCE | ENVIRONMENT AND CLIMATE CHANGE FAO || PROGRAMME ONU-REDD D’APPUI AU PROCESUS REDD+ EN REPUBLIQUE DU CONGO

The UN-REDD program is a United Nations collaborative initiative on Reducing Emissions from Deforestation and Forest Degradation in Developing Countries. The Republic of Congo received support from the UN-REDD Program during the implementation of the National Programme from October 2012 to July 2016. The ONU-REDD support aims to develop national capacities for organization, dialogue, strategic analysis and technical capacities to support the REDD + mechanism in the country.

“This is the first time we have won an opportunity with UN-REDD managed by FAO where we will be working on Reducing Emissions from Deforestation and Forest Degradation (REDD). With this win, we will widen our horizons to climate change in addition to forest governance work.”



Photo Courtesy: Pixabay



Anuja Shukla

Senior Program Manager
Urban Reforms & Infrastructure
IPE Global

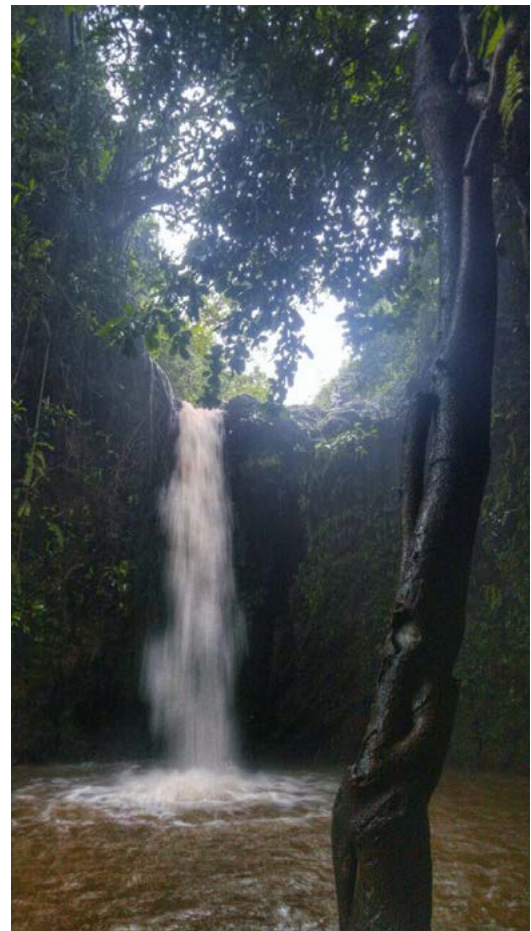
DEPARTMENT OF TOURISM, GOVERNMENT OF KARNATAKA: PREPARATION OF A COASTAL MASTER PLAN FOR THE THREE COASTAL DISTRICTS IN KARNATAKA

The coastline of Karnataka stretches for 320 kms between Mangaluru in Dakshina Kannada district and Karwar in Uttara Kannada district. The beautiful beaches, stunning backwaters and incredible islands make this state a potential tourism hot spot.

The Coastal Master Plan will act as a building bridge between biodiversity, generation of livelihood opportunities for locals and provide for sustainable tourism development. It will include initiatives for protection of local resources, and developing economic opportunities for the dependent communities living in tourism rich regions. It will also include strengthening partnerships and collaboration between biodiversity and development sectors. The plan shall aim to ensure that the biological conservation and development should go hand in hand.

A special mention to Suraj Kumar, Manager - Urban Reforms for being instrumental in this project win.

“Coastal tourism in India is considered to be one of the fastest growing sectors with its central 4S attributes of sea, sand, sun and sky. In order to create safe, stable and attractive environments with clean waters and healthy coastal habitats, it is necessary to develop well-managed sustainable coastal tourism projects. In line with the same our project Coastal Tourism Master Plan for Karnataka has developed a beach suitability model ensuring sustainable yet productive use of Karnataka’s entire coastline which in turn would boost regional tourism economy.”



OUR AFRICA TEAM CONTINUES TO MAKE INROADS IN THE GENDER SECTOR



Photo Courtesy: Leeshypoo at Pixabay

UNDP SOMALIA || PROGRAMMATIC REVIEW AND COUNTRY CONTEXT ANALYSIS ON GENDER

The project win with the UN Joint Programme on Local Governance (JLG) and United Nations Children Fund in Somalia is a prestigious one which involves a programme gender review and brief country context analysis to further strengthen Somalia's gender mainstreaming efforts.

Through participatory discussions with all stakeholders including government counterparts in Somaliland, Puntland and Mogadishu; youth across Somalia to understand their needs and aspirations, the project will also look at the environment perspective for increased opportunities and reduced challenges to build a better life.

WOMEN BRING A DIFFERENT PERSPECTIVE

In a world where we measure wellbeing and progress by GDP and economic growth, the goods and services that women and nature provide remain unaccounted for all due to their infinite capacity for self-maintenance and self-regeneration.

Women are more vulnerable to environmental degradation and climate change but also have different perspectives, concerns and ideas for change. No society can develop sustainably without transforming the distribution of opportunities, resources and choices for women and men so that they have equal power to shape their own lives and contribute to their families and communities. Until these are considered, environmental sustainability will remain a distant goal.

BY TEAM CORPORATE COMMUNICATION

Tanya Singh, Shilpi Jain, Sapna Subba, Aashna Bhatia, Kriti Pandey

CONNECT WITH US: connect@ipeglobal.com

IPE Global Limited

IPE Global House
B-84, Defence Colony
New Delhi - 110024, India
Tel: +91 11 4075 5900
Fax: +91 11 2433 9534
Email: ipe@ipeglobal.com



Expanding Horizons. Enriching Lives.

www.ipeglobal.com



<https://goo.gl/bhjaXJ>



<https://goo.gl/vTg8Cj>



<https://goo.gl/09oTR9>



<https://goo.gl/Xllyj5>



Expanding Horizons. Enriching Lives.

www.tripleline.com



Expanding Horizons. Enriching Lives.

www.ipeafrica.com



www.imperiahealth.com



Expanding Horizons. Enriching Lives.

www.ipeckd.com